

## **Historic, Archive Document**

Do not assume content reflects current scientific knowledge, policies, or practices.



LIBRARY  
JAN 27 1942  
Dept of Agriculture

# GREEVER'S



# 1942 SPRING CATALOGUE



GREEVER'S

Chilhowie,

---

Virginia

## GREEVER'S GUARANTEE

We guarantee the safe arrival of your order and the vitality and purity of the seeds, bulbs and plants to the full amount of the purchase price. Should any bulbs, seed or plants prove untrue to name we will gladly refund purchase price any time within 4 months.

Even with the highest quality seeds, bulbs and plants, success in gardening or farming depends largely upon the cultivation, soil and weather conditions.

Therefore in no case shall Greever's be liable for more than the amount actually paid us for seed, bulbs or plants.

If for any reason whatever you are not satisfied with any article purchased from us, we want you to return it to us at our expense. We will then exchange it for exactly what you want, or will return your money, including any transportation charges you have paid.

**On account of market conditions our prices are subject to change with out notice. Should the merchandis be higher we will notify you before shipping, if it declines we will refund the amount overpaid.**

## HOW TO SEND MONEY

Our terms are cash with order to everyone, money should be sent by check, Post Office money order, Express money order or Registered mail. Please do send stamps on orders over 50 cents.

We cannot accept C. O. D. orders

We try to fill all orders on the date specified, but in the case of plants, weather conditions sometimes make it impossible to ship on date specified but we will do the best we can.

We pay postage on orders amounting to \$2.00 or over for shipment at one time except on items marked freight or express collect in our catalogue.

On small orders add 8 cents to pay postage and cost of packing.

## PLEASE DO US A FAVOR

If you are receiving more than one catalogue in your home, we will appreciate it if you will tel us what names you are receiving them under, also which one you prefer to have it sent to.

Thanks for this co-operation.

## Greever's Deodorant Cream

**A non greasy Vanishing Cream  
Destroys objectional body odors. It is  
not an astringent. Especially adapted  
for use with Sanitary Napkins.**

**Valuable also in destroying perspiration odors of feet and under arms.**

**1 ounce jar 10c**

( About 4 times the size of ordinary 10c deodorant )

**For rough chapped  
hands and face**

**Greever's**

## MEMTHOLATED LOTION

**Has been used by discriminat-  
ing ladies for over 20 years.**

**6 ounce bottle- 25c**

## For Ladies Over Twenty

**You need not worry about  
your skin becomming dry and  
full of wrinkles. Just feed the  
skin on your face and neck  
every night with-**

**Greever's**

## SKIN & TISSUE CREAM

Greever's Skin and Tissue Cream is composed of the three oils that actually penetrate and feed the skin tissues. If your skin is becoming dry and little wrinkles are beginning to appear, use Greever's Skin and Tissue Cream for one month, if you are not satisfied with the results we will reftand your money.

**2 ounce jar only 30c**

In co-operation with the Governments efforts to conserve paper we are reducing the number of pages in our catalogue by omitting descriptions of most of the well known vegetables and flowers.

**Our seed are of the same high quality and our prices consistently lower than others offering the same quality of seed.**

## Bunch Beans

1 lb. plants 40 feet of row

PRICE ON ALL BUNCH BEANS

pkt. 10c, lb. 25c, 3 lb. 70c

Greever's Original Strain of  
SULPHUR BEANS

Burpees Stringless Green Pod

Extra Early Stringless Red Valentine

Tendergreen

Giant Stringless

Tennessee Green Pod

French Horticultural

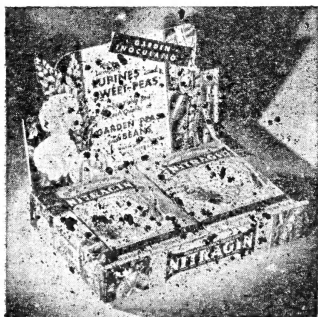
The above are all green podded

Top Notch Golden Wax

The most popular yellow pod

PRICE ON ALL BUNCH BEANS

pkt. 10c, lb. 25c, 3 lb. 70c



**Inoculate all beans with  
NITRAGIN**

**For better crops- Garden size 10c**

## Pole or Cornfield Beans

PRICE ON ALL POLE BEANS

pkt. 10c, lb. 25c, 3 lb. 70c

Kentucky Wonder

Lazy Wife

Wrens Egg or October

Kentucky Wonder Wax- Long thick golden yellow pods.

## Shell Beans

White Navy

Goddard or Long October

Yellow Eye or Bird Eye

PRICE ON ALL SHELL BEANS

1 lb. 20c, 3 lb. 50c

## New Vegetable Edible Soy Beans

The Soy bean is one of the most nutritious of all plants, products contain approximately 20% fat and 40% Protein.

If you have been thinking of soy beans as a feed for livestock, plant some Bansei soy beans this year and add an entirely new vegetable to your garden plot in the future. They are easy to grow, not attacked by Mexican Bean Beetle.

The beans are not only delicious when eaten green or dry, but they are excellent source of Vitamin A, B, and G.

**JOGUN-** Plant erect, of medium height. Pods large, gray. Beans almost spherical, yellow, of nutty flavor.

Pkt. 10c, Pound 35c

**TOBACCO SEED**

**will be found on page 22**

Remember- Greever's Pay Postage on orders of \$2.00 or over except when otherwise stated.

## Lima or Butter Beans

**FORDHOOK BUSH LIMA**—the outstanding bush lima for home use the beans are large and thick with fine flavor. **Pkt. 10c, lb. 30c**

**HEBERSON BUSH LIMA**—the southern small Butter Bean, beans small flat and of excellent quality. **Pkt. 10c, lb. 25c.**

**KING OF THE GARDEN POLE LIMA**—the most popular pole lima bean, a heavy yielder of large plump beans of finest quality. **Pkt. 10c, lb. 30c**

## Garden Beet

1 ounce plants 100 feet of row. Plant from April till August. Thin to stand 3 inches apart in row.

**EARLY WONDER**—Globe shaped, blood red, medium size and fine flavor. **Pkt. 5c, Ounce 15c**

**DETROIT DARK RED IMPROVED**—The favorite all-round beet, very dark red and stays dark after cooking, globe shape. **Pkt. 5c, 1 ounce 18c**

**IMPROVED EARLY BLOOD TURNIP**—An old favorite main crop turnip shape, dark red flesh light red with lighter zones. **Pkt. 5c, 1 ounce 18c**

## Stock Beet

1 ounce plants 100 feet

Grow some of this fine feed for cows and poultry. Takes very little trouble and they are greatly relished by all kinds of stock and poultry.

**MAMMOTH LONG RED MANGEL**—The largest of the stock beets, makes fine feed for cows, hogs, and chickens. **Pkt. 10c, 1 lb. \$1.00**

## Brussels Sprout

**DWARF IMPROVED**—A sure cropper, producing very tender sprouts. Sow in June and handle like cabbage. **Pkt. 5c.**

## Cauliflower

**EARLY HEADING HELIOS**—The heads are not extra large and have plenty of foliage, the only cauliflower, we have found that will head satisfactorily in our climate. **Pkt. 10c.**

## Sugar Cane or Sorghum

**SUGAR DRIP**—No sorghum has yet been developed that will compare with this in yield, and quality of syrup. **Lb. 15c.**

## Broom Corn

**STANDARD EVERGREEN**—yields a heavy brush free from center stems and crooked brush. **Pkt. 10c, lb. 25c**

## Celery

**GOLDEN DETROIT**—The standard of excellence in the self bleaching class, plants heavy, compact and full hearted, 20 to 22 inches tall. **Pkt. 5c**

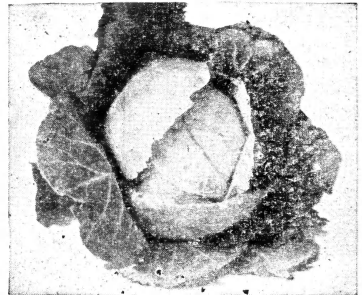
**WHITE PLUME**—Medium size, very tender, bleaches readily. **Pkt. 5c.**

We will have plenty of celery plants this year, see plant section for prices.

## Broccoli

**ITALIAN GREEN SPROUTING**—Each sprout about 5 inches long, ends in a small head of deep green buds. It is one of the most delicious green vegetables. **Pkt. 5c.**

## Cabbage



**COPENHAGEN MARKET**—heads average 3 7-19 lb. in our trial grounds, **pkt 5c, oz. 45c, 1-2 lb. \$ .25**

**MARION MARKET**—Yellows resistant Copenhagen, about 10 days later, heads a little larger, same shape and quality. **Pkt. 5c, ounce 45c, 1-2 lb. \$2.25**

**RESISTANT DETROIT**—A new yellows resistant Copenhagen type, heads as early as the regular Copenhagen Market, heads nearly as large, 10 days earlier than Marion Market.

**Pkt. 5c, ounce 45c, 1-2 lb. \$2.50**

**LARGE LATE FLAT DUTCH**—large flat heads fine for winter keeping.

**Pkt. 5c, ounce 45c, 1-2 lb. \$ .25**

**SHORT STEM DANISH BALLHEAD**—

Round heads, firm, crisp and good winter keepers.

**Pkt. 5c, ounce 45c, 1-2 lb. \$2.25**

## Cantaloupe or Muskmelon

**DELICIOUS**—Melons 6 to 6½ inches in diameter, moderately ribbed and closely netted. Flesh bright orange and delicious in flavor. **Pkt. 5c, ounce 15c**

**HALES BEST**—Fruit are oval heavily netted, bright salmon flesh which is firm, fine grained and very sweet. **Pkt. 5c, ounce 15c**

**BANANA**—Banana shaped about 18 to 25 inches long, 4 to 7 inches in diameter, has thick orange flesh, sweet and juicy. **Pkt. 5c, 1 ounce 15c**

**LARGE HACKENSACK**—The melons are large nearly round somewhat flattened in the ends, has wide slices, deeply netted, the flesh is thick sweet and juicy, a very fine home melon. **Pkt. 5c, 1 ounce 15c**

## Dill

**LONG ISLAND MAMMOTH**—A superior strain of dill well worth using.

**pkt. 5c**

## ROTODUST

Will Kill Those

Pesky striped cucumber beetles.

**19c lb. - 5 lb. 75c**

## Carrot

1 ounce will sow 200 feet of row.

**EMPEROR**—An outstanding type especially developed to meet the demand for a long smooth handsome carrot. Flesh rich orange extending to center, fine grain tender and of excellent quality. **Pkt. 5c.**

**RED CORED CHANTENY**—deep reddish orange with core of about the same color, tender and sweet, 5 to 6 inches long. **Pkt. 5c.**

**CORELESS**—Flesh reddish orange, coreless, cylindrical blunt end, crisp tender and of very delicate flavor. **Pkt. 5c.**

**DANVERS HALF LONG**—An old favorite, thrives in a greater variety of soils than any other carrot, about 8 inches long, tapering, flesh deep orange crisp and tender. **Pkt. 5c.**

## Sweet Corn

The Improved Golden Country Gentleman.

Large handsome ears, dainty shoe peg kernels, beautiful golden color, the flavor is one to be long remembered—a sugar Nut-like sweetness all its own, very tender and stays in roasting ear stage longer.

**Pkt. 10c, 1 lb. 25c**

**EARLY SURPRISE**—The earliest of the sweet corns, ears white and 4 to 5 inches, very delicious, matures about 2 weeks earlier than other sweet corns.

**Pkt. 10c, 1 pound 20c**

**ADAMS EXTRA EARLY**—a very early corn, not a sweet corn, ears small white, its principal feature is its earliness.

**Pkt. 10c, 1 lb. 20c.**

**HURBANK BANTAM** Golden ears about 8 inches long with the delicious flavor of Golden Bantam

**Pkt. 10c, 1 lb. 20c**

**COUNTRY GENTLEMAN**—needs no description.

**Pkt. 10c, 1 lb. 20c.**

**STOWELLS EVERGREEN**—a standard late variety, large ears, white, stays tender a long time, easy to silk.

**Pkt. 10c, 1 lb. 20c**

## New Disease - Resistant Corn

**GOLDEN CROSS**—Very uniform in habit of growth, size, and maturity. The ears are 8 inches long and they are closely set with 14 rows of light yellow grains filled with delicious sweet pulp. Often bears 2 ears per plant.

**Pkt. 10c, 1 lb. 35c.**

## Pop Corn

**T.N.T.**—Has big yellow kernels bursting into large tender creamy balls of delicious flavor.

**Pkt. 10c, 1 lb. 20c**

**WHITE RICE**—the old favorite, small white kernels pops well and has good flavor.

**Pkt. 10c, 1 lb. 20c**

## Okra

**WHITE VELVET**—Superior tenderness and flavor. The pods are round smooth and light green in color. Matures in about 55 days.

**Pkt. 5c, oz. 10c.**

## Egg Plant

**BLACK BEAUTY**—A popular variety of vigorous growth that holds its fruit well off the ground. Fruit large, smooth, of excellent quality, and a purplish black color.

**Pkt. 5c.**

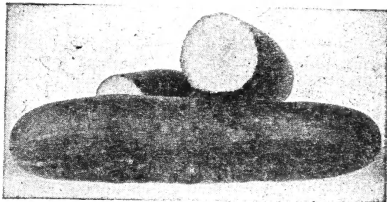
## Kohl Rabi

**EARLY PURPLE VIENNA**—60 days, bulbs flattened globe shaped, best for use when 2 to 2½ inches in diameter, purple, flesh white, crisp and tender.

**Pkt. 5c.**

## Cucumbers

1 ounce will plant 80 hills.



**STRAIGHT** 3—60 days. The straight, symmetrical fruits grow about 8 inches long and about 1½ inches in diameter. When ready for use they are rich deep green.

**Pkt. 5c, oz. 15c**

**PICKLERS SPECIAL**—The best of the pickling varieties.

**Pkt. 5c, ounce 15c**

**IMPROVED LONG GREEN**—The old favorite in most gardens.

**Pkt. 5c, ounce 15c**

**WHITE WONDER**—The cucumbers are white from the time they begin to form and remain white until ripe.

**Pkt. 5c, ounce 15c**

## Kale

**BLOOMSDALE DOUBLE EXTRA CURLED**—A superior kale being very curly and dark green, retains its color well after cutting.

**Pkt. 5c, oz. 10c.**

**TALL GREEN CURLED SCOTCH**—it is so hairy that moderate frost improves its flavor; grows 3 feet tall and bears light green densely curled leaves of delicious flavor. Plant in May or June.

**Pkt. 5c, oz. 10c.**

## Mustard

**SOUTHERN GIANT CURLED**—Large curled leaves.

**Pkt. 5c, oz. 10c.**

**FLORIDA BROAD LEAF**—Large and smooth leaves.

**Pkt. 5c, oz. 10c**

**TENDERGREEN or MUSTARD SPINACH**—A mighty good new salad.

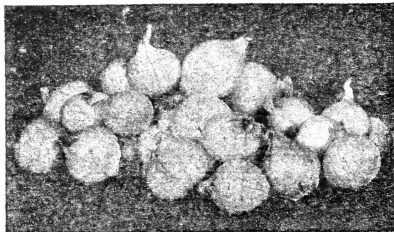
**Pkt. 5c, oz. 10c**

## Onion Seed

**SWEET SPANISH**—Valencia. It is the large Spanish type, globe shape, bright golden yellow. The flavor is very mild and the shape very uniform.

**Pkt. 5c.**

## Onion Sets



**JAPANESE ONION SETS**—Makes the best onion grown from sets, they are almost the same size as Yellow Danvers, but are more solid, better flavor and keep longer.

**1 lb. 18c, 5 lb. 75c**

## Head Lettuce



**DREER'S ALL HEART**—Our favorite lettuce. The heads are delicate yellowish green color, with few outer leaves enclosing a solid part of the most delicious flavor. **Pkt. 5c; oz. 15c**

**ICEBERG**—Light green in color, crisp and tender, may be used as a loose cutting variety also. **Pkt. 5c; oz. 15c**

## Loose - Cutting Variety

**BLACK SEEDED SIMPSON**—Plant large with broad frilled light green leaves. **Pkt. 5c; oz. 15c**

**EARLY CURLED SIMPSON**—Early bright lustrous green, frilled, and of good quality. **Pkt. 5c; oz. 15c**

**GRAND RAPIDS**—Green with a tinge of red on the leaves. **Pkt. 5c; oz. 15c**

## Parsley

**PARSLEY—MOSS CURLED**—The leaves are very dark green in color. **Pkt. 5c**

## Parsnips

**GUERNSEY**—Attractive medium-long roots with a broad shoulder gradually tapering downward. Skin is light in color and quite smooth. The 2 in across. **Pkt. 5c; oz. 20c**

**HOLLOW CROWN**—Longer than Guernsey but not so broad. **Pkt. 5c; oz. 20c**

## Peanuts

**VIRGINIA**—Nuts grow very large and contain two kernels to the shell. One of the easiest of all to harvest, and a desirable variety for any purpose. **Pkt. 10c, lb. 25c**

## Sweet Pepper

**SUNNYBROOK**—A Pimento pepper. Sweet, has somewhat the shape of a small flattened tomato, smooth, deep scarlet, thick fleshed and sweet.

**RUBY KING**—Sweet, one of the old standard sorts, of good size and color.

**WORLD BEATER**—A large sort, a cross between Chinese Giant and Ruby King. Flesh thick and mild; very productive.

**GOLDEN QUEEN**—Sweet, the largest yellow pepper  
**PIMENTO**—This makes a most useful sort for home use. Fruit round and running to a point at blossom end. Turns to bright red as it matures.

## Hot Pepper

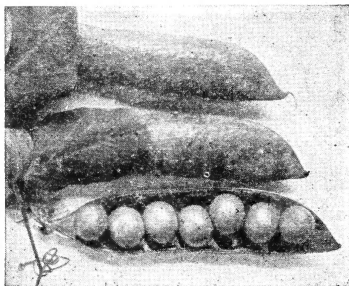
**LONG RED CAYENNE**—Hot has fruit long, slender. The color is bright red.

All peppers package 5c.

For fine transplanted plants see plant section.

## Garden Peas

Sow early in the spring. Cover 1 to 2 in, deep. 1 lb. will plant 100 feet of row.



**ALASKA**—The earliest of all, can be planted early in April. Grows 30 inches. **Pkt. 10c, lb. 25c**

**LAXTON'S SUPERB or EARLY BIRD**—Dwarf vine about 20 inches high. Very fine for earliest home garden. **Pkt. 10c, lb. 25c**

**STRIDAH**—Unequaled in pod size, exceptional in quality, resistant to fusarium wilt. Its pods are 5 to 6 or even 6½ inches long, very dark green, pointed and somewhat curved at the tip. Vine 24 to 28 inches tall. It has the unusual quality of remaining tender and sweet a week to ten days after reaching the picking stage. **Pkt. 10c, lb. 25c**

**LITTLE MARVEL**—Vines 18 inches, very thrifty. Seed medium sized, distinctly wrinkled, green. **Pkt. 10c, lb. 25c**

**THOMAS LAXTON**—Unsurpassed for the home garden. Vine 3½ ft. tall. **Pkt. 10c, lb. 25c**

**ALDERMAN or IMPROVED TELEPHONE**—Vines grow nearly 4 ft. high, the pods are about 5 in. long. **Pkt. 10c, lb. 25c**

**RAIN SUGAR MELTING**—"Edible pod". The best flat podded edible variety. Vines 4½ ft. **Pkt. 10c, lb. 25c**

## Pumpkin

**CONNECTICUTT FIELD**—The standard field variety for stock feed. It makes a good yield of medium size pumpkins that are slightly ribbed, and have a smooth yellow skin with yellow flesh. **Pkt. 5c, oz. 10c, lb. 45c**

**TENNESSEE SWEET POTATO or SUGAR PIE**—Fine grained and deliciously sweet; fine flavored, splendid keeper. **Pkt. 5c, oz. 10c**

**GREEN STRIPED CUSHAW**—A smooth crookneck shaped variety an old time favorite, white with green mottling and stripes thick yellow flesh. **Pkt. 5c, 1 ounce 10c**

## Rape

**DWARF ESSEX RAPE**—For a good supply of late fall "greens" or cooked salad also for very early use in the spring, sow some rape in August after you have laid your corn by. It is cheap and makes mighty good greens. **Pkt. 10c, 1 lb. 25c**

## Salsify

Mammoth Sandwich Island Salsify, the standard variety, produces long tapering roots.

Pkt. 5c.

Remember—Greever's Pay Postage on orders of \$2.00 or over except when otherwise stated.



## Radish

**ICICLE**—Decidedly the best white variety  
**FRENCH BREAKFAST**—Roots oblong blunt, rich scarlet with white bottom, flesh white, crisp.  
**SCARLET TURNIP WHITE TIPPED**—25 days. Handsome, popular variety of outstanding quality.

All Radish Pkt. 5c, oz. 10c

## Rutabaga

**AMERICAN PURPLE TOP**—The standard yellow-fleshed rutabaga for home and market use, large, smooth, neckless and sweet. Pkt. 5c, ½ lb. 25c 1 lb. 45c

## Summer Squash

**EARLY SUMMER CROOKNECK**—Fruits about 10 inches long, of typical bush growth, early and productive or squash of deep orange skin and salmon flesh of delicious flavor. Pkt. 5c, 1 ounce 10c

**EARLY WHITE BUSH SCALOP**—Cymbing or Patsy Pan, fruit white, flattened and scalloped about 8 in. in diameter with creamy white skin. Pkt. 5c, 1 oz. 10c

**DES MOINES or TABLE QUEEN**—A small acorn shaped squash 5 to 6 inches long and 4 inches in diameter.

Pkt. 5c, 1 oz. 10c

## Winter Squash

**TRUE HUBBARD**—Olive shaped squash with dark bronze-green skin, the rind is heavy and hard making it a good keeper. About 12 inches long. Deep orange fine grained flesh sweet and dry, the standard winter squash for all purposes. Pkt. 5c, 1 oz. 10c

**GOLDEN HUBBARD**—Similar to above but smaller and deep golden color. Pkt. 5c, 1 oz. 10c

Rotodust will kill the little striped cucumber beetles also the worms that bore in the stem, keep a little about the stem where it enters the ground.  
 1 lb. 19c, 5 lb. 75c

## Turnips

**PURPLE TOP WHITE GLOBE**—The roots are large, globe shaped, and very smooth; upper part purple red, white below; flesh white, crisp and tender. Pkt. 5c, 2 oz. 10c, 1b. 40c

**PURPLE TOP STRAP LEAF**—The popular early flat purple top turnip, small tops. Pkt. 5c, 2 oz. 10c

**SEVEN TOP**—Very hardy, makes excellent "greens". Pkt. 5c, 2 oz. 10c

## Sunflower

**MAMMOTH RUSSIAN**—A magnificent sunflower, heads 18 to 20 inches in diameter, very showy, often grows 10 ft. tall, seed plump makes fine feed for poultry. Pkt. 10c, 1b. 25c

## Swiss Chard

**GIANT LUCULLUS**—Start cutting in about 6 weeks after sowing and continue until frost. Pkt. 5c

## Spinach

**BLOOMSDALE**—A quick growing savory leaf variety, popular with home and market growers.

**NEW ZEALAND**—Foliage thick, succulent, dark green, never sunburn, a true heat resistant in edible condition from July until frost. Excessive heat does not check its growth.

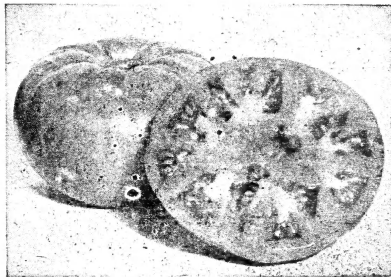
All Spinach Pkt. 5c, oz. 10c

## Tomatoes

**GREEVER'S MAMMOTH ORANGE**—Southwest Virginia's outstanding and most popular tomato. Our own introduction. We introduced this outstanding tomato in 1930. The fruit is large often weighing 2½ lbs. very smooth, solid having no extra seed, flesh orange colored and of fine texture and delicious flavor. Very little acid.

We use the utmost care in selecting the plants from which our seed are taken, using only the smoothest and largest tomatoes. Only at GREEVER'S are you sure of getting the pure strain of these famous Orange tomatoes.

Packet (about 25 seed) 10c



**GREEVER'S CRIMSON GIANT**—Undoubtedly the largest, most brilliant red and best flavored tomato ever produced. Almost seedless, practically coreless and certainly matchless. Very smooth round oval shape, and a rich color. Revelation to those who like meaty bright red tomatoes. Pkt. 10c

**CHEART**—A recent introduction of most distinct form, producing deep pear-shaped fruit some of which are of immense size and weight. Solid, deep rose-red flesh with few seeds and extremely mild and free from acid. Pkt. 10c

**IMPROVED PONDEROSA**—We have a select strain of this fine old tomato, beautiful pinkish purple color. Pkt. 10c

**GOLDEN COLOSSAL**—Large and smooth and a beautiful golden yellow. Pkt. 10c

**SCARLET DAW**—Very early and prolific. Fruits medium large with thick wall structure, globular, smooth, bright scarlet, ripen well to the stem. Pkt. 5c

**MASTER MARGLOBE**—Noted for its uniform shape, solid meaty fruits and bright red color. Pkt. 5c

**BONNIE BEST**—Unexcelled as a general purpose tomato. Very early, fruit handsome evenly colored bright red scarlet medium size; flattened globe shaped, smooth and firm. Pkt. 5c

**BESSIE**—Extra large size fruit. The flesh is a beautiful deep scarlet. Pkt. 5c

**BRIMMER**—Large smooth pink tomato solid, very little core. Pkt. 5c

See plant section for transplanted plants.

We have increased our Greenhouse space in order to have large sturdy plants by May 5th. We were sorry to disappoint some of our customers this season by not having our plants large enough May 10th. We expect to have plenty large fine plants this season.

## Water Melon

**KLECKLEY SWEET**—Fruit large, oblong, very dark green, flesh bright rich red, crisp, exceedingly sweet seed white. Pkt. 5c, oz. 10c

**TOM WATSON**—The melons are 18 to 20 inches long and 10 to 12 inches in diameter. Flavor delicious. Pkt. 5c, oz. 10c

**YELLOW FLESH ICE CREAM**—Beautiful golden yellow flesh and its luscious sugary flavor. Pkt. 5c, oz. 10c

**STONE MOUNTAIN**—Fruits very large, broad oval, a most round, dark green, rind hard and tough; flesh bright red, crisp and sweet. Pkt. 5c, oz. 10c

## Pepper Plants

We will have the following varieties: Sunnybrook, PIMENTO, Ruby King, Worldbeater, Golden Queen

1 dozen 20c, 2 dozen 35c, 4 dozen 60c

### POTTED PEPPER PLANTS

Sunnybrook and Worldbeater 50c dozen

If by mail add 20c for postage and packing.

### HOT PEPPER

LONG RED CAYENNE

20c dozen, 2 dozen 35c

## Onion Plants

CRYSTAL WAX or WHITE BERMUDA—Clear white skin, flat in shape, sweet and mild.

YELLOW BERMUDA—Similar to above but with yellow skin.

Price on all plants: 100 for 25c, 500 for 70c, Postpaid.

## Broccoli Plants

ITALIAN GREEN SPROUTING

1 dozen 20c, 2 dozen 35c.

## Celery Plants

We recommend setting celery June 1st to July 1st.

Our plants will be ready June 1st.

GOLDEN DETROIT

WHITE PLUME

Prices on either variety 50 for 40c, 100 for 75c

## Cauliflower Plants

EARLY HEADING HELOIS

Ready for delivery April 1st to June 1st.

1 dozen 20c, 2 dozen 35c.



## Cabbage Plants

Ready for delivery last week in March or first of April

GREEVER'S COPENHAGEN MARKET—

Prices: 50 for 19c, 100 for 35c, 500 for \$1.15.

CABBAGE PLANTS FOR WINTER USE

Ready for shipment June 15th to August 1st.

We will have the following varieties.

LATE FLAT DUTCH, DANISH BALL HEAD short stem

Price: 100 for 35c, 300 for 80c, 500 for \$1.15 Postpaid

## Sweet Potatoes

Ready for shipment after May 10th.

We will have the following varieties:

EARLY TRIUMPH—This is a rather short potato, light cream colored, and meat fairly dry. They thrive mightily well in Southwest Virginia.

SPANISH RED—This is a delicious potato. The outside skin is a dark red, and the meat is a light yellow color, mealy, and somewhat nutty flavor. Personally this is our favorite.

PORTO RICO—Its skin and meat are pinkish yellow, moist and sweet.

NANCY HALL—Light yellow in color, with meat not as moist as Porto Rico.

Prices on Sweet Potatoes: 100 for 35c, 300 for 85c, 500 for \$1.35, 1,000 for \$2.25.

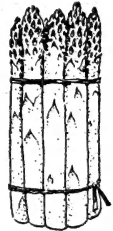
## Asparagus

Every home should have an asparagus bed. It is so little trouble after once established—and fresh Asparagus is a real delicacy.

MARY WASHINGTON—Rust proof, produces large sprouts

2 year roots

25 for 60c, 50 for 90c, 100 for \$1.50



Z-110

## Tomato Plants

Over 100,000 fine transplanted tomato plants. Hundreds of blooming potted tomato plants, these are NOT mailable.

### Our Special Varieties

Greever's Mammoth Orange, Greever's Crimson Giant, Greever's Oxheart

(see seed section for description)

### Our Main Crop Varieties

BRIMMER, PONDEROSA, GOLDEN COLOSSAL, BEEFSTEAK MASTER MARGLOBE, BONNY BEST, SCARLET DAWN

These fine transplanted plants 25 for 25c, 100 for \$1.00

We will have large potted plants of the following varieties:

Scarlet Dawn Ponderosa  
GREEVERS MAMMOTH ORANGE  
GREEVERS CRIMSON GIANT

60c dozen

If wanted by mail Postage and Packing 20c extra

# Flower Seed and Plants

We have the most popular of the old favorites with some of the newer varieties. We regret space will not permit more pictures and descriptions.

## Ageratum

AGERATUM—Blue Cap

"R" One of the best bedding plants being literally a sheet of dwarf compact blue blooms.

Pkt. 10c Plants 25c doz

## Asters

SUPPER GIANT—Los Angeles—

beautiful shell pink, fully double, 5 to 8 in. in diameter.

Giants of California—Flowers are large and full, of the crego type but much larger. We have these in Carmine, Rose, White, dark Purple and Mixed.

Giant Mammoth Peony Flowered—Immense fully double flowers borne on long straight stems. Carried in: Flesh, Pink, White, Purple, Mixed.

Improved Giant California Sunshine—The flowers 4 to 5 in. in diameter are composed of a single row of loosely placed outer petals which contrast with unique yellow quill like center disc. Carried in: Pink, Blue, Purple, White and Mixed.

Early Beauty—Wilt resistant, fully double, flowers 3 in. in diameter, carried in: Violet, Crimson, Pink, White.

Aster Seed—10c Pkt.

Transplanted plants: 30c dozen



## Antirrhinum or Snapdaogon

All our snapdragons are the tall large flowering types.

BRILLIANT ROSE—Rose pink

CRIMSON KING—Deep crimson.

GOLDEN KING—Giant golden yellow.

HARLEQUIN—Copper shades.

QUEEN VICTORIA—Pure white.

University of California De Luxe Mixture—of all the rust proof types.

All snapdragons: Pkt. 10c

Transplanted Plants: 35c dozen

## Cosmos

These fine fall flowers are valuable addition to any flower garden.

DOUBLE CRESTED CRIMSON KING—bright red double flowers.

DOUBLE CRESTED MIXED—A fine mixture of colors all double.

EXTRA EARLY SINGLE MIXED—A wide range of colors.

Cosmos Early Klondyke Orange Flare—

All Cosmos pkt. 10c

## Gypsophila

ANNUAL BABY BREATH

Open bell shaped flowers, used so much for mixing with other flowers in bouquets and vases. Easy to grow, blooms quickly.

We have 2 varieties.

CARMINEA—Deep rose

L. DON MARKET—Large pure white. Seed Pkt. 10c

## Brachycome

BRACHYCOME—Swan river daisy. Small Cineria like white blossoms, blooms nearly all summer, 9 to 12 inches tall, fine for edging and rock gardens.

Seed Pkt. 10c

## Gaillardia

A very showy annual, remarkable for its profusion, size and brilliance of flowers. They blossom continuously from early summer until November.

DOUBLE MIXED—A lovely combination of colors.

SINGLE MIXED—Single flowers, mixed colors.

Seed Pkt. 10c.

Transplanted Plants 35c dozen

## Alyssum

"R" Beautiful little plant for beds, borders, rock-work, and baskets, blooming profusely all summer.

LITTLE DOGGIT—"New" miniature white flowers.

Pkt. 10c, Plants 25c dozen

## Annual Canterbury Bells

Grows 2 to 2½ feet, long spikes covered with lovely bell like flowers. Carried in the following colors:

ANGELUS BELL—Deep rose

LIBERTY BELL—Deep violet blue

A BELLING BELL—White

Seed Pkt. 10c, Transplanted plants 35c dozen

Potted Plants (2½ in. pots) 55c dozen

## Dianthus

SWEET WIVELSFIELD—Large single flowers resembling the large flowering Sweet William in a great variety of colors.

Plants 30c dozen, seed pkt. 10c

## Helichrysum

STRAWFLOWER

MIXED—A wide variety of colors in this old favorite flower for winter bouquets. Cut and dry just when the buds begin to open.

Pkt. 10c.

## Calendula

CALENDULA CHRYSANTHA—The large flowers are an exquisite shade of buttercup yellow, with long loosely arranged petals which droop to give the rounded appearance of our favorite Chrysanthemum.

GOLD—Large golden yellow dark center.

ASTERPIECE—Large flowers rich deep orange, dark center.

Prices on all Calendulas:

Seed Pkt. 10c Plants 25c dozen

## Gourds

SMALL VARIETIES MIXED—Very ornamental for trailing along the fence or trellis Pkt. 10c.

## Helianthus

SUNFLOWER

This well known old flower has a place in so many gardens especially to be used as a background. We have 2 varieties.

SINGLE STELLA—5 feet, golden yellow, dark centered single flowers.

CHRYSANTHEMUM FLOWERED—8 feet, select double golden yellow lacinated petals. Seed Pkt. 10c.

## Lupins

Now we have an annual lupin, grows 3 to 4 feet with several spikes of 25 to 30 blossoms each.

MIXED COLORS—Pkt. 10c

Transplanted plants 35c dozen

## Larkspur

### TALL DOUBLE.

stock flowered. Lovely for beds and as cut flowers. We have 3 popular colors and mixed. **AZURE BLUE**—Sky blue.

**LUSTROUS CARMINE**—Deep carmine.  
**IMPERIAL PINK PERFECTION**  
MIXED

Seed Pkt. 10c

Transplanted plants 25c dozen

## Nasturtium

We have 3 of the semi-double sweet scented varieties.

**GOLDEN GLEAM**—Golden yellow  
**SCARLET GLEAM**—Scarlet

**GLEAM HYBRIDS**—A fine mixture of colors with lots of the pastel shades.

Pkt. 10c

These two old time varieties are still popular.

**DWARF SINGLE MIXED**  
**RUNNING VARIETIES MIXED**  
Pkt. 5c.

## Petunias

**LARGE FLOWERED DOUBLES MIXED**—a large assortment of colors in these fine doubles, about 90% come true from the seed.

Pkt. 15c

Transplanted plants 40c dozen  
Potted plants (2½ in. pots) 65c dozen

### RUFFLED MONSTERS—

erect and robust habit. The flowers are very large often 5 inches in diameter, beautifully ruffled. The colors contain a wide variety with richly marked veins

Seed Pkt. 15c

Transplanted plants 40c dozen  
Potted plants (2½ in. pots) 65c dozen

## 3 Beautiful New Petunias- Grandiflora Miniature Nina Compacta

This new type petunia is the nearest yet developed to a compact ball shape plant. Plants reach a height of 8 inches with a spread of 8 to 10 inches and will have a dozen or more flowers in bloom at one time. Flowers 2½ in. in diameter. Very fine for pot use, borders and window boxes. We have this fine plant in the following:

**VELVET BALL**—A deep luscious shade of velvety blood red.

**BRILLIANT ROSE GEM**—rich deep rose

**WHITE GEM**—Pure white.

Seed of either of these: Pkt. 10c

Transplanted Plants: 30c dozen

Potted Plants (2½ in. pots): 50c dozen

## Petuna- Hollywood Star

Flowers are medium size produced with such profusion that the whole plant seems to be a solid mass of color, flowers golden throated rich rose color, blooms throughout the summer.

Pkt. 10c, Transplanted plants 30c dozen  
Potted plants (2½ in. pots) 50c dozen

## Single Fringed

large well formed blossoms having exquisitely fringed edges, not quite so large as Ruffled Monsters but more free flowering. We have five varieties in this type.

**ROWANY LASS**—Deep crimson deeper throat.

**STEEL BLUE**—Medium blue

**THEODOSIA**—Rose with gold throat, a real beauty.

**VIOLECA**—Deep velvety violet

**FLUFFY RUFFLES MIXED**

Seed Pkt. 10c, Transplanted plants 40c dozen

Potted Plants (2½ in. pots) 65c dozen

## Nierembergia- Dwarf Cup Flower

A beautiful little border plant

Starts flowering when the

plants are only 3 inches tall and keeps right on till frost. It is at all times neat and tidy looking, the young flowers covering the older flowers and seed pods. Flowers lavender blue heightened by a touch of yellow in the center. Plants are definitely dwarf 5 to 6 inches tall with a spread of 8 to 10 inches. Fine for borders, rock gardens, window boxes or pots.

Seed Pkt. 10c, Transplanted plants 35c dozen

Potted Plants (2½ inch pot) 65c dozen

## Balcony Petunia

This type of petunias is noted for their abundance of bloom and length of blooming season. They are showy plants with long branches covered with blooms 2½ to 3 inches in diameter.

**BLACK PRINCE**—Deep velvety red

**NEW ROSY MORN**—Clear rose

golden throat larger flowers than old type rosy morn.

**ROYAL BLUE**—Fine strong blue

**FINEST MIXED**

Seed Pkt. 10c

Transplanted plants

25c doz.

Potted plants (2½ in. pots)

50c dozen

## Marigold

**EARLY DIXIE SUNSHINE**—Entirely new Chrysanthemum-flowered type, brilliant golden yellow, tall bushy growth of rich green foliage, long stems.

**YELLOW SUPREME**—Creamy lemon yellow, carnation-flowered, 3 to 2½ feet.

### COLARETTE "CROWN OF GOLD"

Originated on Burpee's Floradale Farms

A new kind of Marigold with a Chrysanthemum-like top or crown surrounded by a collar of big broad petals of the same color—bright golden orange.

Seed Pkt. 10c

## French Dwarf Double Hybrida

Small Type

Compact plants 12 to 14 inches high, all double and begins flowering very early. Flowers medium size Color a golden orange shade with numerous blotches and striped combinations

Pkt. 10c, plants 30c dozen

## Phlox

**STAR MIXED**—Unique star shaped flowers of a large variety of colors.

**DUMMUNDI GRANDIFLORA**—This is the finest yet, having the largest heads of blooms as well as the largest individual flowers. Of strong, sturdy growth, attaining a height of 12 to 15 inches.

Seed Pkt. 10c  
Transplanted plants 30c dozen  
Potted plants (2½ in. pots)  
50c dozen

## Poppy

**CALIFORNIA POPPY**—A favorite annual which blooms throughout summer and fall.

**SINGLE MIXED**—Superb mixture of most unusual shades and colors.

**DOUBLE ART SHADES MIXED**—Showy large flowers carried on long erect stems, many artistic colors.

Seed Pkt. 10c

## Salvia

SCARLET SAGE

**SALVIA SPLENDENS**—24 inches tall  
**FIREBALL**—14 inches tall

Seed Pkt. 10c Transplanted plants 30c dozen  
Potted plants 50c dozen

## Scabosia

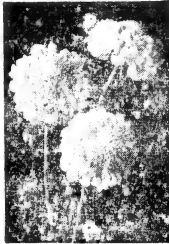
MOURNING BRIDE

A universal favorite because it is easy to grow and blooms profusely from mid summer till frost, blossoms richly colored on long stems plants 2½ to 3 ft.

**Giant Flowered Mixed**

Seed pkt 10c

Transplanted plants 30c dozen



## Verbena

Our improved variety has extra size flowers and large tuesses. We have four varieties.

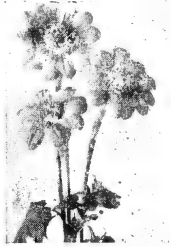
**BEAUTY OXFORD HYBRIDS**—  
Shades from rose pink to rose  
**CRIMSON GLOW**—Glowing  
crimson

Romance— Royal Blue Creamy  
yellow eye

**GOOD MIXED**—A large assortment of colors

Seed Pkt. 10c

Transplanted plants 30c dozen  
Potted plants (2½ in. pots)  
50c dozen



## Tithonia

Garden Flower of the Incas

One of the most brilliant of all fall flowers with gorgeous glistening orange-vermillion blooms borne profusely on plants 5 to 6 feet in height.

Pkt. 10c

## Sweet Peas

**RUFFLED MIXED**—A wonderful assortment of colors, all beautifully ruffled. Pkt. 5c, oz. 15c

**SPENCER MIXED**—This mixture contains a very large assortment of varieties. Pkt. 5c, oz. 15c

## Zinnias

Their wide range of varieties, sizes shapes and colors make them the most useful class of flowers grown.

DAHLIA FLOWERED

**WILL ROGERS**—New. Lovellest and most brilliant scarlet red

**GOLD MEDAL Mixed**—Finest assortment of dahlia flowered colors

Seed Pkt. 10c

## California Giant

**FINEST Mixed**—A mixture of all the colors of this immense zinnia. Seed Pkt. 10c

## Super Crown of Gold

Large well formed flowers in soft pastel shades on long level lid at base with deep green foliage.

Pastel tints mixed

Pkt. 10c

## Fantasy

**PINEST Mixed**—A bright colorful mixture of shaggy petaled medium sized double flowers. Seed Pkt. 10c

## Improved Liliput and Baby Zinnia

flowers are small compact and symmetrical on long strong stems, plants about 2 feet high.

**CANARY GEM**—Canary yellow.

**CRIMSON GEM**—Crimson

**ROSEBUD**—Rose pink

**GOOD MIXED**—All colors mixed.

Seed Pkt. 10c

## Cupid Zinnia

Small button like flowers on plants about 1 foot high, good for borders.

**GRACILLIMA (Red Riding Hood)**—Deep scarlet

**PIXIE**—Bright yellow

Seed Pkt. 10c

## Stocks

DOUBLE

Mixed all colors Seed Pkt. 10c

Transplanted plants 30c dozen

## PANSIES

### MASTERPIECE

Very large frilled blossoms in a wide range of colors, these are very unique.

Seed Pkt, 10c  
Transplanted plants 60c dozen

### ENGLEMANS GIANTS

Immense blossoms 2 to 4 in in diameter in all the lovely colors.

Seed Pkt, 10c  
Transplanted plants 50c dozen



## Perennial Flower Plants

### AQUELEGIA

#### COLUMBINE

Graceful large blooms carried on slender wiry stems from late spring till early summer. Fine for rock gardens borders and cut flowers.



**LONGISSIMA** — Delicate pale yellow, spurs often 4 inches long

**CRIMSON STAR**—Long spurred crimson with white corolla.

**PINK SHADES**—Various lovely shades of pink.

**Orange and Scarlet Shades**—lovely orange to scarlet colors long spurs.

Any of above varieties, strong 1 year plants 10c each, 3 for 25c

### ARMERIA

#### SEA PINK or THRIFT

Dwarf compact plants useful in rock gardens and borders. The clover like flowers of the Formosa are borne on stiff wiry stems 18 inches, fine for cutting, bright rose pink to dark rose.

10c each, 3 for 25c

### HARDY CARNATIONS

#### PINKS

For borders or rock gardens. We have 2 of these

#### CARDINAL RED

#### DELICATE PINK

Plants, 10c each, 4 for 25c

Plants 10c each, 3 for 25c

### ANCHUSA

Light blue For-Get-Me-Not

10c each, 3 for 25c

### BUDDELIA

#### BUTTERFLY BUSH

A perennial shrub bearing tapering spikes of lilac flowers till frost. Very attractive to butterflies. Fine for cut flowers. Cut back to ground each fall.

Strong roots or plants each

## DELPHINIUMS

Delphiniums are among the most beautiful and widely used perennials the regal stateliness of their massive colorful spikes in unequaled by any other flower. They succeed best in deep rich well drained soil.



**PACIFIC GIANTS**, flowers extremely large often 2½ inches in diameter, well formed and double.

We have in this strain.  
Dark Blue shades  
Dark Violet shades  
Lavender and Pastel shades  
White

**BLACKMORE** and **LANGDON** Strains of mildew resistant light and dark colors mixed.

**CARDINALE**, brilliant scarlet

Start your delphinium bed this year with these fine 1 year plants.

10c each, 3 for 25c

### PYRETHRUM

**JAMES KELWAY**, deep scarlet

**ROSE SHADES**, light to deep rose

**DOUBLE**, double red

Plants 10c each, 4 for 25c

### ORIENTAL POPPY

Glorious orange scarlet flowers. Makes a very bright spot in your perennial garden.

10c each, from 3 inch pots

### SHASTA DAISY

**CONQUERER** Largest single flowers, with yellow center.

**DIENERS DOUBLE** About 90% large white double flowers.

Plants 10c each, 3 for 25c

### VERBENA

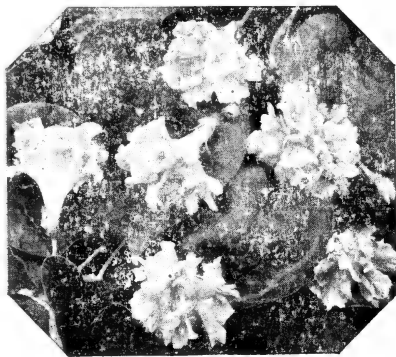
The hardy verbena, delicate lavender flowers on upright stems, 8 to 12 in

Plants 10c, 4 for 25c

Keep a jar of  
**BURN - EZ**  
handy for quick relief from  
**BURNS**

**25c**

## Climbing Vines



Climbing vines are so useful in shading porches etc. In running on trellises, fences etc. for shielding or hiding some back lot, their foliage and blossoms are beautiful.

**Rose Marie Morning Glory**—Early free-flowering flowers deep rose thoroughly double; a new type of morning glory. **Pkt. 10c**

**Heavenly Blue Morning Glory**—The most popular of all morning glories; large blossoms of intense sky-blue shading to white in the throat. **Pkt. 10c.**

**Canary Bird Vine**—A beautiful rapid growing annual climber with charming canary yellow blossom.

**Cardinal Climber**—A rapid climber with beautiful cardinal blossoms. **Pkt. 10c.**

### Scarlet O'Hara Morning Glory

A new color in Morning Glories, rich dark wine red or deep rosy crimson. Very free-flowering, flowers 4 inches in diameter. **Pkt. 10c**

## Lawn Grass Seed

### SUPERIOR LAWN GRASS SEED

Our best all purpose mixture, makes a smooth green velvety lawn. The most suitable grasses for making an even thick mass of sod sure to produce the best results under average conditions of soil and climate. **1 pound pkg. 55c**

### FOREST CITY LAWN GRASS SEED

A splendid mixture of Kentucky Blue Grass fancy red top, timothy, White Dutch Clover, and domestic rye grass. An excellent economical lawn seed. **1 pound 45c**

### SHADY LAWN GRASS SEED

A specially prepared mixture suited for planting under shade trees or in shaded corners. Where general mixtures do not thrive. It is composed of choice seed of the finest and most costly grasses adapted to shady places. **1 pound 58c**

Remember—Greever's Pay Postage on orders of \$2.00 or over except when otherwise stated.

## Chrysanthemums

**ALBERT MÜLLER**—Apricot suffused pink, decorative type. October 1st blooming

**ALADDIN**—September blooming. Bronze decorative.

**AMELIA**—September blooming, bright pink, decorative.

**FRANCIS WHITTLESEY**—September blooming, rich bronze and garnet, decorative.

**JEAN CUMINGS**—September blooming, white, decorative.

**R. MARION HATTON**—October 1st blooming, canary yellow.

**TASIVA**—September blooming, white, decorative.

**YELLOW NORMANDIE**—September blooming, yellow

Plants 15c each, Selection of 8 for \$1.00

## Strawberries

Just about 100 plants will supply the average family with delicious fresh strawberries, and what is more delicious than Fresh Strawberry Short Cake.

Our assortment contains the 4 most popular varieties.

**DERSETT**—It is a most productive variety bearing practically perfect berries of most attractive appearance and deliciously sweet wild-strawberry flavor. Productive, of good size, with attractive berries of a light scarlet color.

50 for 70c, 100 for \$1.19

**CHESAPEAKE**—Big shapely berries, very delicious, fruit ripens later in season, about a week after Fairfax.

50 for 70c, 100 for \$1.19

Our Garden Assortment of Strawberries consisting of 25 each of our four berries will give you a supply of delicious berries for table use practically all summer.

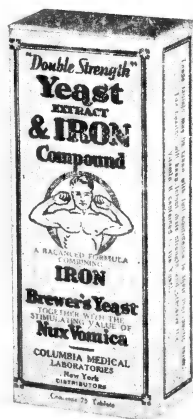
Price: \$1.25 per Assortment

**MASTODON**—Produce heavily the first season. The Mastodon has proven itself far superior to other overbearing varieties in many ways. Fruit is almost double the size of the common overbearing.

25 for 75c 100 for \$2.00

**FAIRFAX**—It is as sweet as Dersett, but matures a few days later having firmer flesh of a darker color.

50 for 70c, 100 for \$1.19

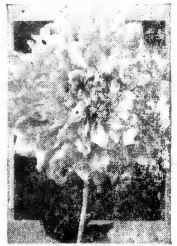


Yeast & Iron  
Compound  
Helps to  
increase your  
weight and  
build up your  
blood

Bottle of 75

69c

# DAHLIAS



We have added quite a few new and lovely dahlias to our collection this season.

**HAD YOU THOUGHT**—The love and care of flowers has never had an injurious or lowering influence on any one; instead, it has invariably brought continued and uplifting delight. The amount spent for one or two visits to the theatre would buy a whole seasons enjoyment in growing dahlias.

Your Dahlias will be shipped the later part of April in time for planting, on up to May 15th.

**BO-PEEP**—The most beautiful and perfectly shaped. A pompon dahlia we have grown. A beautiful shade of rosy purple. One of the best keepers as a cut flower. Arranges lovely in vases or baskets. **25c each**

**MADCAP**—A very unique pompon. A ball type, amber yellow center, and tips strong red. **30c each**

**STAR OF THE EAST**—A pure white pompon. We do not believe a flower garden is hardly complete without a few white pompoms. They are useful as cut flowers in so many ways. **25c each**

**IMMACULATE**—We challenge anyone to show us a finer purer snow white dahlia than this. Has lots of vigor, fine stem and blooms freely. Informal decorative. Irregular curved petals of pure white. A real beauty. **35c each**

**JUDGE A. B. PARKER**—A fine blend of copper and gold. Plants are tall with an abundance of beautiful decorative blossoms. **20c each**

**MILLIONAIRE**—A very large and beautiful decorative type, pink with a lighter center. **25c each**

**MRS. HORTON**—Medium size, autumn shades, decorative type. **15c each**

**MRS. I. De VER WARNER**—Still the most popular of all lavenders. Decorative type, very prolific bloomer. **15c each**

**PRIDE OF CALIFORNIA**—Very popular crimson red. Decorative type. **15c each**

**PRINCE OF PERSIA**—A real giant of the most crimson red. Flowers often eleven inches in diameter. We believe this is the most outstanding showy dahlia in our garden. Decorative type. **35c each**

**ROBERT E. LEE**—A beautiful free blooming brilliant red, of the informal decorative type. **25c each**

**BABY ROYAL**—The most popular of all miniature dahlias. It has every attribute and its color of salmon apricot attracts all. **20c each**

**COLOR RIOT**—A beautiful ball shape miniature. Fine for cut flowers. Its color is an attractive purple tipped with white. **15c each**

**GOLD DROP**—A miniature decorative type of pure rich yellow. An abundant bloomer. **35c each**

**BRILLIANCE**—A strikingly beautiful good red orange decorated. A good cut flower. **25c each.**

**HARRY MAYER**—Decorative type, very large, light opalescent pink, with a deep pink reverse. Satisfactory everywhere. **20c each**

**HARVEST MOON**—A beautiful blend of old gold, orange and pink. Decorative type. Plants grow very tall with an abundance of beautiful flowers on long stems. **30c each**

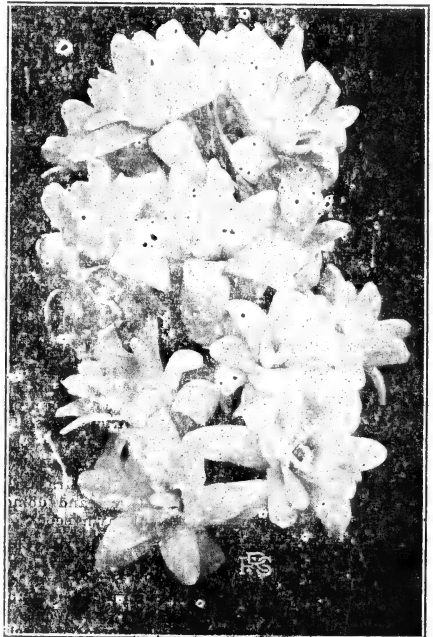
**DREER'S YELLOW**—The largest of all clear yellow balls. Ball type and a beautiful clear yellow. **25c each**

We have quite a few dahlias of mixed varieties, but color separated. We can give you the color desired but do not know the type. We have these in yellow, white, pink, red, and in order of the each.

**OUR REGULAR MIXED DAHLIAS**—All varieties and colors mixed. **75c dozen.**

## TUBEROSE

(Double Pearl)



One of the most deliciously fragrant and beautiful of the summer bulbs. One or two spikes will perfume a whole room.

Plant a few of these at our low price of .

**Large Bulbs- 10c each, 3 for 25c**



# Save on Thread and Yarn

We have the two famous brands, J. P. Coats' and Clark's O.N.T. Recognized as the world's finest threads and yarns.

Greever's Every Day Low Price Assures Savings

## J. P. Coats & Clark's O. N.T.



6 cord sewing cotton carried in white and black in the following numbers: 8, 10, 12, 20, 24, 30, 40, 50, 60, 70, 80, 100. All the above 4c a spool

## Brilliant Boilfast Crochet, Embroidery and Knitting Cotton



Carried in rose, pink, ecru, blue, white, lavender, green and yellow. 75 yard balls.

5c each

### Crochet Cotton

Highly mercerized, lustrous and boilfast. Women the world over proclaim Clark's Crochet cotton the best they have ever used. Fine in quality, low in price.

Colors: White and Ecru.

- No. 5 has 75 yards to ball 9c
- No. 10 has 100 yards to ball 9c
- No. 20 has 125 yards to ball 9c
- No. 30 has 150 yards to ball 9c

### Extra Strong Quilting Thread

200 yards to the spool. Carried in white, green, yellow, pink, light and dark blue, lavender and orange. 8c a spool

### Mercerized Thread



Fine quality, boilfast, mercerized, smooth finish, clear and bright colors, carried in the following colors: Peach, dark and light green, dark and light red, pink, old rose, pongee, dark and light brown, tans, dark and light blues, lavender, yellow and oranges. Size 50 only, 100 yards to spool.

4c each, 6 for 22c

**Remember—** Greever's Pay Postage on orders of \$2.00 or over except when otherwise stated.

## EMBROIDERY FLOSS—

2c a Skein

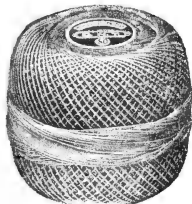


For best results in embroidering use Clark's Embroidery threads. The colors are clear and beautiful, its boilfast and will not fade.

Our price: 2c a skein

We have the following colors:  
 184 Shaded yellow, 192 Shaded brown, 188 Shaded greens, 181 Shaded roses, 182 Shaded blues, 62 Russet, 81 dark brown, 12 black, 96 sea green, 48 Hunters green, 1 White, 61 Ecru, 37 Lavender, 54 Violet, 45 Dark Violet, 32 Purple, 109 Turkey red, 51-A Golden brown, 51-B Dark golden brown, 52 Dark brown, 98 Fern green, 91 Emerald green, 5 Moss green, 104 Mid apple green, 108 Dark willow green, 119 Light crimson, 120 Crimson, 24 Light oriental blue, 8 Blue, 69 Light steel blue, 108 Steel blue, 76 China blue, 43 Dark yellow, 11 Orange, 35 Dark orange, 72 Burnt orange, 45 Beauty pink, 67 Light rose, 46-B Beauty rose, 46-A Mild rose, 59 Dark rose.

## Knitting & Crochet Cotton



Brooks Boilfast Knitting and Crochet Cotton a firm heavy twist for crocheting or knitting smart string-tyle dresses, bed spreads, dollies, chair sets, etc. 300 yards to skein. Carried in white and ecru.

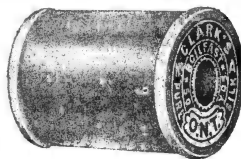
In balls— 23c

## Clark's Knit - Kro - Sheen

Mercerized knit and crochet cotton. Its fine lasting luster makes it especially suitable for bed spreads and accessories. WHITE and ECru.

Dark yellow, seal brown, blue jewel, spanish red, skipped blue, maroon, turquoise, salmon pink, hunters green, blossom pink, forest green, violet. 23c skein

## Silk Thread



Clark's O.N.T. boilfast, colored, for hand or machine sewing. Carried in black, white, browns, blues, reds and greens. 4c each

Because of the large variety of shades in the various colors we cannot adequately describe each shade. If you will send us a sample of the goods you desire to be matched we can more nearly match it for you, in silk or mercerized tread.

# INSECTIDES

## Greever's Rotodust

A favorite method of control for striped Cucumber Beetle, Cabbage worms, etc.

### Greever's Rotodust

Contains no Arsenic Lead or Flourine, may be used with safety, there is no danger in eating vegetables that has been dusted with **Greever's Rotodust**. Greever's Rotodust has given excellent results in the control of Cabbage worms, MEXICAN BEETLE, Potato Beetle, and Potato Bug, Cucumber bug, leaf hoppers and practically all other leaf eating insects.

Dust your glad bulbs in storage and the young glads for thrips. When used in the house it kills Roaches, Bed Bugs, Water Bugs and Ants. Keep a package handy it has so many uses.

1 lb. 19c, 5lbs. 75c

## Cynogas

For killing Moles, Ground hogs, Rats, etc.

1 lb. can 75c

## Nicotine Sulphate 40 percent

Used extensively for controlling Aphids, lice, leaf hoppers, etc. Also useful for painting roost for controlling poultry lice.

2 ounce 29c      4 ounce 75c      1 Pint \$1.20  
**MASSEY DUST—FOR ROSES**

## Greever's Combination Spray

Pyrethrum and Derris Root "Rotonone" Combined

More universal solves the insect problem than any other spray. There are no harmful residue and no need of washing to remove them. May be used on the most tender plants, no more harmful than ordinary water applied under same conditions. Greever's Combination Spray will control most all insects as follows: Cabbage worms, Thrips, MEXICAN BEAN BEETLE, Currant worms, Cucumber beetles, Caterpillars, Rose chaffer, Rose slugs, Mites and other insects.

1 ounce makes 2 to 4 gallons spray 25c  
 4 ounces makes 8 to 16 gallons spray 50c  
 12 ounces makes 24 to 48 gallons spray \$1.10

## Alorco Cryolite A Flour ne Insecticida

An economical control of Mexican Bean Beetle and other insects on vegetable crops.

As a liquid spray

1 lb. makes 25 gal. spray

As a dust

1 part with 3 to 10 parts flour, sulphur or road dust.

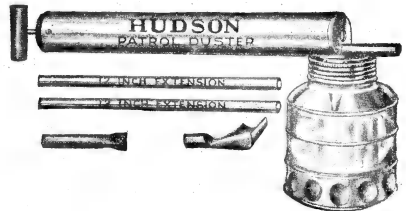
1 pound package 25c  
 6 pound package \$1.00



### HUDSON THRIFTY Nu-Eez Funnel Top

No. 120G—Galvanized Tank, Cap. 2½ gallons, 6½ x 18 inch tank; 1¾ x 12 inch pump; 22 inches high pressure spray hose; 18 inch curved brass extension rod; perfection automatic shut off valve which locks open for continuous spraying, all brass nozzle weight each 8 pounds.

Price \$2.95



### HUDSON PATROL Glass Powder Reservoir

A duster for every class of work Sturdy glass jar is easily replaced by any standard Mason jar. Handles all types of dry powder. Not affected by a ton of spray material. Contents of reservoir always visible.

Tin pump 1¾ inch diameter, 13 inch stroke, with air valve to prevent powder getting into pump. Fitted with 2 12-inch extension pipes and 2 nozzles, one straight, one angle discharge.  
 No. 612—Price 98 cents

### HUDSON BOOSTER

No. 191G—Galvanized tank cap. 3½ gallons, 7¼x20 inch tank. 1¾x12 inch pump; 22 inches high pressure spray hose; Perfection automatic shut-off which locks open for continuous spraying; 18 inch curved brass extension rod; all brass nozzle; weight each about 8½ lbs.

Price \$3.25

### HUDSON CLIMAX

No. 235G—Cap. 3¾ gallons, 7¼ x 21 inch tank; 1¾ x 14 inch pump; 24 inches high pressure spray hose; Perfection automatic shut-off valve which locks open for continuous spraying, 2 foot brass extension rod, all brass angle, spray nozzle wt. 10 lb. each.

Price \$4.75

**HUDSON No. 432  
Nu-Action Pump  
Continuous**



Heavy tin pump and tank. Fitted with brass syphon tube and double nozzle, adjustable for any type of spray from fog to solid stream and sprays ahead or up. Absolutely will not spit. Tank 4 1/4 x 4 1/2 inches. Capacity 1 full quart.

No. 432—Price 69 cents

**HUDSON CRITIC  
Nu-Action Pump  
Continuous**



Adapted for solutions which corrode metals. Glass tank is especially designed for strength and visibility. Wide mouth jar permits easy filling, emptying or cleaning. May be capped and set away with liquid.

Price \$1.00

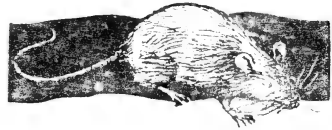
**Champion Dose Syringe**



Accurately fitted, double leather plunger, heavy seamless brass barrel, nickel-plated. Barrel and barrel base in one piece.

**2 ounce size with 2 pipes \$1.25**  
**4 ounce size with 2 pipes \$1.50**

**Greever's Slaysem**



A red squill poison which is death to rats and mice will not kill poultry, animals or people.

Government experiments have proven (Greever's Slaysem) red squill is the safest and surest way to rid your premises of rats and mice, they seem to like it better than other poisons. Greever's Slaysem retains its deadly properties indefinitely.

**A full 2 oz. box only 25c**

**Parazene**

To kill Moths—Easily, Economically. Without any danger of injuring any fabric or color.

Used in quantities of 1 lb. to each 75 cubic feet of closet or trunk space kills Moths and larvae.

No danger of fire from its use.

PARAZENE is a white crystalline chemical which vaporizes leaving no residue or stains, the vapors are heavier than air going down through clothing etc. killing all moths and larvae.

Thirteen sheep require 12 months to produce 100 lbs. of wool. In the same time the descendants of ONE female moth can destroy it.

It pays big dividends to treat all your woolen clothes, blankets, rugs etc. twice or more a year with Parazene.

Specialty priced at: 29c lb. 3 lb. 80c

**Death Drops**

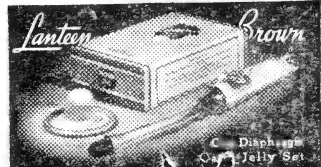
**A Liquid Rat Poison**

Especially valuable for use around barns and out houses that are away from water. Just pour in little pans or jar tops and set around in places where rats frequent. A few drops will kill any rat.

**1 pint bottle 35c**



**FOR MARRIAGE HYGIENE**



**NEW LOW PRICES**

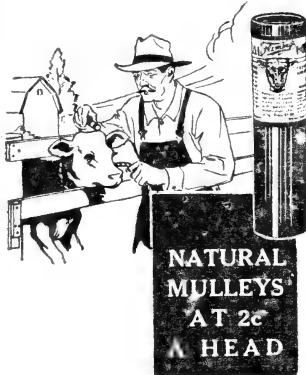
Lanteen Brown (Cap diaphragm and jelly set complete) . . . \$2.79  
Lanteen Blue Refill (Antiseptic jelly, double-size tube) . . . \$1.39  
Lanteen Yellow (Douche Solution, 40 Applications) . . . \$0.79

## Crisp Dog Remedies

The favorite dog treatment in our section and we highly recommend these to our customers. We will be glad to send you a booklet on request.

Black Tongue Remedy	\$2.00
Hot Shot Nerve Sedative—for running fits	\$1.25
Distemper Remedy	\$1.25
Mange Remedy	\$1.00
Hook Worm and Round Worm Capsules—for grown dogs or small size pups.	60c
State size wanted	
Tape Worm Tablets	60c
Combination Wormer—kills Hook and Round Worms	10c
Combinations Pills	50c
Flea Soap	25c

## Horse and Cattle Remedies



Don't forget to prepare for emergencies which may arise at any time—especially COLIC.

Fleming's Veterinary medicines are guaranteed with the kind of guarantee an honest business house wants to give an honest customer. If any one of Fleming's Veterinary preparations does not do the work it is recommended to do we will refund to you its purchase price, you to be the judge and your word to go.

Fleming's Medicine No. 1—For Fistula and Poll Evil	\$2.50
Fleming's Medicine No. 2—for lump jaw	\$2.50
Fleming's Medicine No. 3—For Flatulent and Spasmodic Colic	\$1.00
Fleming's Blister Liquid—For hog spavin thorough-pla chapped hock, etc.	\$2.00
Fleming's Blister Paste—for spavin, Ringbone, etc.	\$2.00
Fleming's Veterinary Antiseptic Oil—For cuts etc.	50c
Fleming's Genaray Lintment	\$1.00
Fleming's Gallform—Antiseptic dusting powder	60c
Fleming's Chemical Horn Stop—For preventing the growth of horns in calves	\$1.00
Fleming's Fistula Syringe	50c

## Miscellaneous Stock Remedies

BLACK LEG AGGRESSIN—10 dose vial	60c
Hypodermic Syringe—For giving aggressin and lung medicine. With 2 needles.	
10 cc. \$2.50	30 cc. \$3.00
IODINE SOLUTION—In mineral oil for lung worm.	1 Pint 50c
Dr. Hobson's Veterinary Healing Powder	25c
Epsom Salts 2 lbs. 15c, 5 lbs. 75c, not prepaid.	
Castor Oil 1 Pint 40c, 1 quart 65c	
Sulphur 2 lbs. 15c, 5 lbs. 35c not prepaid	
Powdered English Rose n	17c lb.
Copperas	10c lb.
Dr. Hess Udder Ointment	50c
Absorbine, Sr.	\$2.70
Crafts Distemper Remedy	70c
Gombaults Caustic Balsam	\$2.00

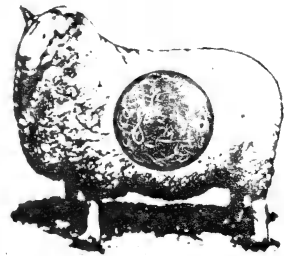
## Hog Remedies That Pay

Greener's Hog Powder—Most hogs at times become wormy, our Hog Powder expells worms, improves the appetite and tones up the entire system. You should treat at least twice a year to keep them healthy—it costs just a few cents and will save many times its cost in food. It costs money to feed worms—Kill them

2 Hog Treatment	10c
8 Hog Treatment	25c

Arsenic For Kidney Worms 3 dose treatment 10c  
 Fleming's Expeller Capsules—For Worms in hogs: 100 for \$2.50

## Sheep Remedies



Bluestone for Sheep	4 oz. 5c
Nicotine Sulphate 40%	2 oz. 20c
2 oz. Dosing Syringe	\$1.25
Sheep and Cattle Dip—Five times the strength of phenol in germ killing power.	
1 gallon 87c, 5 gallons \$3.75 Not mailable	

COOPER'S SHEEP DIPPING POWDER. The only Dip which actually kills all sheep ticks and lice with a single dipping and protects against fresh attacks for months because all ticks, eggs and nits are dead the day after dipping is done.

Small size makes 87 gallon	.70
Large size makes 150 gallon	\$2.70
Case of 10 large packages	\$25.00

With wool and lambs high it will pay you more than ever to keep your sheep healthy and free from worms with--

# Greever's Suspension of Phenothiazine

Now 7 1-2 cents a dose  
\$4.80 per gal. F. O. B. Chilhowie, Va.

**By Prepaid Parcel Post**

**1 Quart            \$1.50**  
**1 Gallon         \$5.25**

The merits of our Suspension of Phenothiazine has been proven in 31 states- it is easy to dose, economical and effective.

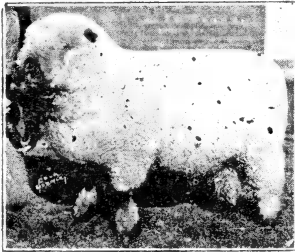
Here is a volunteer letter from a famous Kentucky Judge after he had been using our Suspension of phenhthiazine on his famous flock of prize winning Southdowns.

Greever's  
Chilhowie, Va

Cynthiana, Ky.

Gentlemen:-

Sept. 26, 1941



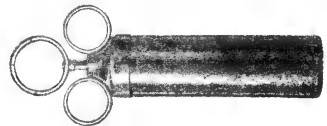
For the past ten years I have been handling from 75 to 100 Southdown ram lambs; carrying through the winter and selling them as yearlings like most breeders in this section I have had trouble getting these rams in condition for sale. Last fall while carrying 115 lambs I used Greever's Phenothiazine and treated them again in March 1941 I have sold all of these rams this year at good prices not withstanding a slump in ram prices and every one who has seen my flock said they never saw sheep in better condition.

Yours very truly  
Judge Frank L. Duffy  
Cynthiana, Ky.



**Powdered Phenothiazine is effective in removing worms from hogs, poultry, dogs and stock**


### CHAMPION DOSING SYRINGE



**2 ounce with 2 pipes        \$1.25**  
**4 ounce with 2 pipes        \$1.50**

**1 lb.            \$1.25 postpaid**  
**5 lb.            \$6.00        "**  
**10 lb.          \$11.00       "**

# POULTRY SUPPLIES



## Greever's Poultry Mineral and Tonic

Will revitalize your stock. It is a wonderful stimulant, appetizer, blood builder and mineral supplier. Contains ingredients for rebuilding and restoring normal tone to the system; stimulants that promote normal activity in the parts; supplies calcium, sulphates, and Phosphates to build strong frames and heavier shelled eggs, better tissue and sturdier nerve cells; Potassium Iodide to act on the glandular system; and the all important Copper and Iron to build rich energizing blood.

Try Greever's Poultry Mineral and Tonic for just 30 days, if you are not satisfied with the results we will refund your money.

Greever's Poultry Mineral and Tonic is not expensive.

A 4 lb. package, enough for 300 lbs. mash costs only 25c.

A 20 lb. package, enough for 1,000 lbs. mash costs only \$1.00

You can make a very satisfactory mash with your own wheat and corn ground by adding Greever's Poultry Mineral and Tonic and giving your chickens your spare milk.

Grow Strong Chicks With

## Poultry Cod Liver Oil

Extra Strong

Each ounce contains 15,000 units Vitamin A and 7,500 units Vitamin D. Builds rugged bone structure and prevents against disease, brings hens through moulting season faster and gives harder, stronger egg shells with increased hatchability.

1 gallon \$1.89      12 oz. bottle 25c

Animal Poultry Yeast Foam 4 lbs \$1.00, 25 lbs. \$6.00

## Fish Food

Keeps Fish Healthy and growing.  
10c

**Lousy Poultry will not grow or lay. It pays big dividends to have a clean flock and house.**

**Greever's Rotenone Louse Powder**—Kills the lice and will not make the chicks sick. Also valuable for killing flies, ants and roaches. **Liberal Box 25c**

Sodium Fluoride ..... 25c lb.

**Nicotine Sulphate**—For painting roosts  
6 oz. bottle 70c,      1 lb. \$1.20

**Sheep Dip**—For general disinfecting for 50c  
Pint 25c,      Quart 40c

**Greever's Poultry Worm Powder**—The easiest way to rid your flock of worms as well as the most economical. A flock treatment to be given in the mash.  
**40 Hen treatment 25c**

## Lee's Gizzard Capsules

Chick Size	50 for 40c	100 for 75c
Pullet Size	50 for 50c.	100 for 1.00
Adult Size	50 for 75c.	100 for 1.25

## Dr. Hess Line

**Panamin**—For toning up the system, increases egg production.      25c, 45c and 95c

**Chick Tablets**—For diarrhoea      25c and 50c

**Poultry Tablets**—For Roup      50c and \$1.00

**Poultry Worm Powder**      50c and \$1.00

## Greever's Chick Mixture



Aids in preventing diarrhoea and other diseases of chicks. It should be kept in the drinking water for at least the first six weeks.

Small package enough for 20 gal. water      25c

Large package enough for 50 gal. water      50c



- Keep your birds healthy and singing
- BIRD LOUSE POWDER 25c
  - BIRD BISCUIT 10c
  - BIRD TONE 25c
  - MOULTING PEPPER 25c
  - SONG RESTORER 10c
  - FITTLE BONE 10c
  - BIRD GRAVEL 10c
  - BIRD SEED 15c

## Reliable Household Drugs

You can rely on Greever's Household Drugs as every item has met our standard of quality. You can also be assured our prices are very low considering our highest quality.

### Cold Remedies

#### ENTORAL

The cold Vaccine taken in capsule form. Considered by manufacturers more efficient than Hypodermic vaccines. Easy to take—just swallow 1 capsule a day for 7 days then 1 or 2 a week till 15 are taken.

Bottle of 15 capsules \$1.00

### Greever's 3 Way Cold Tablets

Consist of Nose drops, to open the nose, Aspirin rub for keeping congestion away from the lungs, and cold capsules for breaking up the cold and relieving the pain and discomfort of colds.

#### GREEVER'S COLD CAPSULES

Without a doubt one of the finest cold capsules on the market for relieving the pain and discomfort of colds and for breaking up the cold.

12 capsules 15c

#### GREEVER'S NOSE AND THROAT DROPS

A few drops when a cold starts often stops it and they give wonderful relief for advanced colds.

1 ounce bottle 25c

#### ASPIRIN RUB

Contains Aspirin in an ointment base that will penetrate the skin. The best counter irritant for rubbing the chest to help break up a chest cold—usually gives relief in one application.

and rheumatism you will find it the quickest relief. "If your chest is tight rub with Aspirin Rub tonight"

Liberal size jar 25c

### Itch Remedies

Anybody is liable to catch the Itch, and anybody can cure it with one of these Itch remedies.

#### GREEVER'S SCABIES LOTION

Will relieve ITCH in from two to three applications. Easy to use, very effective. Does not have a disagreeable odor, and is not greasy or messy. Simply bath and apply with cotton or small cloth.

7c for complete treatment

#### Itch Ointment

A full 4 ounce box at our special price of— 65c

Prevent catching the ITCH by washing your hands after possible exposure with

**GERMICIDIA SOAP**—A Mercuric Iodine soap. Also valuable for use in bath before Itch treatment. 25c per cake

Children in school often get

#### HEAD LICE

#### LARKSPUR LOTION

will kill them- It is harmless to use  
No grease or stain- 2 oz. bottle 25c

### Pain Relievers

**ASPIRIN RUB**—A superior solidified ointment that gives quicker relief than anything we know for Rheumatism, sprains, neuralgia, etc. Our guaranteed relief can be tested with hot water then rub immediately with ASPIRIN RUB rubbing in well. If this does not give some relief we will refund the purchase price. 2 oz. Jar 25c

**1000 CAPSULES**—A famous prescription of a famous doctor for the relief of pain. Especially valuable in relieving tooth aches, head aches, and Neuralgia. 5 Capsules for 10c, 1 dozen for 20c

**5 GRAIN ASPIRIN**—as pure as can be made, the safe economical pain reliever. 2 doz, 10c, 100 for 25c

**PYRADO CAPSULES**—The improved formula for periodic pains. Effective, non-narcotic, not habit forming. Do not interfere with natural processes. 5 Capsules 10c

#### CHLORFORM LINIMENT

2 oz. 25c

#### PHI-NAL TABLETS

12 for 15c, 24 for 25c

#### KNOX—For Athletes Foot

Three applications relieve practically every case. If it fails we will refund your money. 25c per bottle

### Antiseptics

**GREEVER'S ANTISEPTIC SOLUTION**—A pleasant and effective mouth wash, antiseptic and deodorant. Useful in controlling unpleasant breath, as a throat gargle and for dandruff. You will like the quality of this product.

And the price makes it so economical.

1 1/2 Pint Bottle 79c

### Greever's Pine Oil Disinfectant

Useful for disinfecting wounds on people and stock, for bat rooms and general disinfecting purposes. Has the pleasant odor of fresh pine wood.

12 Ounce Bottle 35c

### Miscellaneous Household Drugs

**POWDERED BETA** 1 lb. 10c  
**POWDERED SULPHUR** 1 lb. 10c  
**POWDERED CUPPERAS** 1 lb. 10c  
**RESIN** 1 lb. 15c  
**TURPENTINE**—Pure gum sp. 3 oz. 10c; Pint 30c  
**ZINC OXIDE OINTMENT** 15c  
**MOON BALLS** 1 lb. 15c  
**CAMPFORIZED OIL** 1 oz. 15c; 2 oz. 25c  
**DEWEE'S CARMENTATIVE** 1 oz. 15c; 2 oz. 25c  
**TOOTH ACHE DROPS OR GUM** 15c  
**1 oz SENNA LEAVES or PODS** 10c  
**100 HINKLE CASCARA PILLS** 25c  
**CARTER'S LIVER PILLS** 25c  
**HEAVY RUSSIAN MINERAL OIL** Pt. 40c, 1/2 20c  
**CASTOR OIL** 8oz 25c; 1 pt. 45c  
**MILK OF MAGNESIA TABLETS** 100 for 39c  
**MILK OF MAGNESIA** 16 oz 39c  
**AGAR & OIL** A very popular laxative pt. 69c, qt. \$1.00  
**EPSOM SALTS** 1 pound 10c  
**1 or 2 in GAUZE BANDAGE** 10c  
**1/2 in. X 2 1/2 yard ADHESIVE** 10c  
**READY MADE BANDAGES** 5c  
**FEVER THERMOMETER** \$1.00  
**1 yard GAUZE** 15c  
**DEWITT'S CORN REMOVER**—Will cure take them off 25c  
**CORN, CALLOSUS or BUNION PAD** 10c  
**PLAIN CORN PADS**—Not medicated 10c  
**MERCUCROCHROME 5%** 20c  
**TINCTURE OF IODINE** 15c  
**1 Pint RUBBING ALCOHOL** 25c  
**BORIC ACID** 10c

# Greever's Flavoring Extracts

"BEST BY TEST"

Greever's Compound Extract of Vanilla—Is made from Pure Mexican Vanilla Bean, strengthened with Vanilla and Coumarin. It does not bake out or freeze out as ordinary extracts; the extra strength means it takes less.

**4 ounce bottle 25c**

**12 ounce bottle 60c**

Terpenless Extract of Lemon—The real aroma of fresh lemons.

**2 ounce bottle 25c**

**4 ounce bottle 45c**

## OTHER GREEVER EXTRACTS

Extract of Peppermint

Extract of Almond.

Imitation Extract of Banana

Imitation Extract of Strawberry.

Imitation Extract of Pineapple.

One oz. bottle 15c. 2 oz. 25c.

## GREEVER'S PURE FOOD CAKE COLORING

Made from harmless vegetable colors—Red, Pink, Orange, Yellow, Green, Purple.  $\frac{1}{2}$  oz. bottle 5c.

## Tobacco Seed

ORIGINAL JUDYS PRIDE—Grown by W. S. JUDY CO. 2 acre pkg. 75c 4 acre pkg. \$1.25

ORIGINAL KELLY'S IMPROVED STAND-UP BURLEY—Grown by B. L. Kelly and Sons.

$\frac{1}{4}$  oz. pkg. 50c  $\frac{1}{2}$  oz. pkg. \$1.00

BELL'S BOUBBOX WHITE BURLEY—Grown by J. W. Bell & Son.  $\frac{1}{2}$  oz. 75c. 1oz. \$1.50

## White Burley No 16

KENTUCKY EXPERIMENT STATION  
ROOT-ROT RESISTANT STAND-UP  
WHITE BURLEY

## Certified Tobacco Seed

Grown by

**F. W. Rickard**

**1-2 ounce 75c**

**ROOT - ROT RESISTANT CERTIFIED NO. 16**

**Stand-Up White Burley Tobacco Seed**

Grown by

**J. Olin Woodward**

**Jonesville, Va.**

**1-2 ounce 75c**

Due to war conditions all prices in this catalogue are subject to change without notice.



**Be Sure Your Name And Address Are On This Order.**

If our Merchandise and service please you, please help us by telling others, if not tell us.  
We do not consider a sale closed until you are satisfied.

**Be Sure You Have Signed Your Order.**

Quantity	Name of Seed or Bulbs wanted	Price	Amount

Please keep your order for Seed and Bulbs separate from other goods. Use other side for other merchandise.

# ORDER SHEET

*We pay postage on orders amounting to \$2.00 and over for shipment at one time, except when quoted express or freight collect in the catalogue on smaller orders add 8c to pay postage.*

**NO GOODS SENT C. O. D.**

**Always send remittance with order**

**Our terms are the same to all.**

You may Remit by **MONEY ORDER, CHECK or REGISTERED MAIL.**

**We cannot be responsible for cash sent in a letter unless registered.**

**Please do not send stamps for over 25c.**

Messrs Greever's gives no warranty, expressed or implied as to description, purity, productiveness or any other matter of any seed, bulbs or plants they send out and they will not in any way be responsible for the crop if the purchaser does not accept the goods on these terms, they are to be returned at once.

**G R E E V E R ' S**  
**Chilhowie, Virginia.**

**Please ship me the following as per guarantee in your catalogue.**

**Name** Please prefix  
Mr. Mrs. or Miss

Post Office \_\_\_\_\_ R. F. D. or Street \_\_\_\_\_

State \_\_\_\_\_ Date \_\_\_\_\_

Money Enclosed

Bills or Silver \_\_\_\_\_

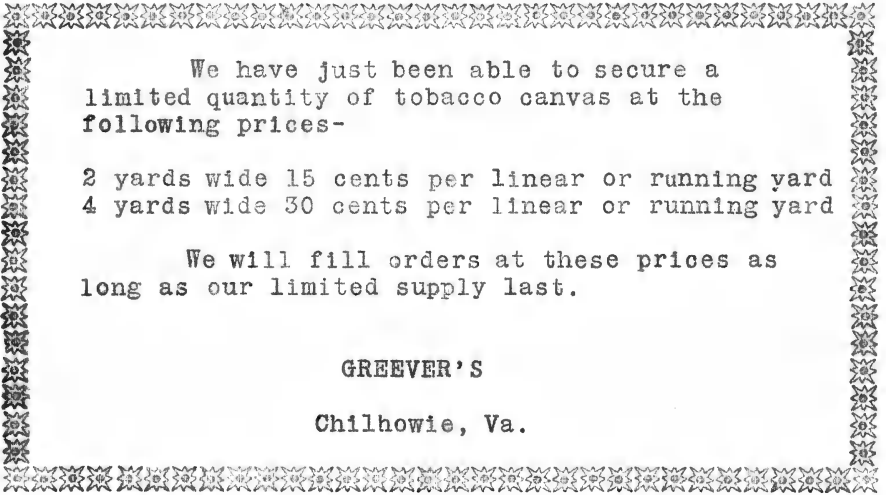
Check \_\_\_\_\_

Money Order \_\_\_\_\_

Total \_\_\_\_\_

**Use this side for Seed and Bulbs**





We have just been able to secure a limited quantity of tobacco canvas at the following prices-

2 yards wide 15 cents per linear or running yard  
4 yards wide 30 cents per linear or running yard

We will fill orders at these prices as long as our limited supply last.

**GREEVER'S**

**Chilhowie, Va.**

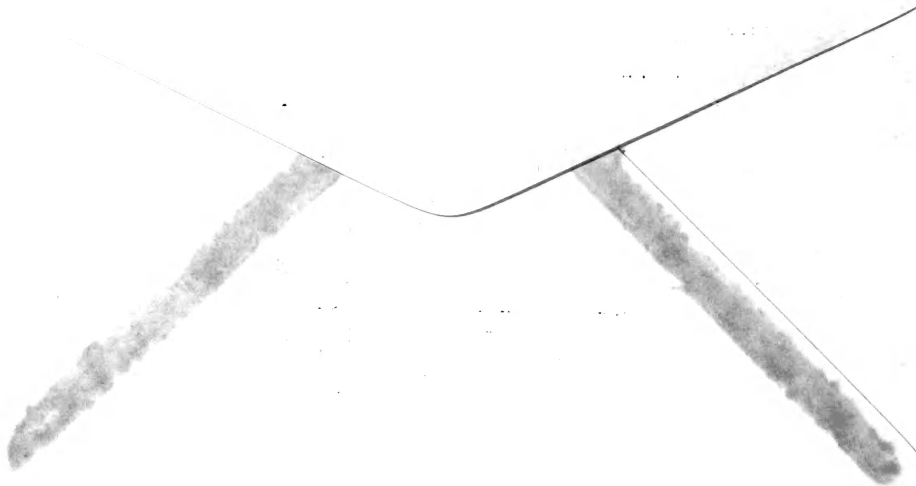


FROM

---

---

**GREEVER'S  
CHILHOWIE, VA.**





## GLADIOLI

The glory of the cut flower gardens. Beautiful in baskets and large vases, keep well and are superb in beauty.

**ALBATROSS**—Large beautiful white. Extremely long spikes. **6 for 25c.**

**ALBANIA**—Another good white, not quite so large. **6 for 25c.**

**BREAK O'DAY**—Early beautiful shrimp pink. **6 for 20c.**

**DR. F. E. BENNETT**—A beautiful orange overlaid with scarlet red. A real beauty. **6 for 25c.**

**GOLDEN SWALLOW**—A new ruffled yellow. **6 for 25c.**

**MINUET**—The best of the pure lavenders. **6 for 25c.**

**PICARDY**—We believe this to be the most gorgeous gladioli grown. Tall spikes, filled with large beautiful ruffled soft apricot pink. If you have never grown a Picardy, try a few this year. **6 for 25c.**

**PIDE OF WANNAKAH**—Here is a real beauty. A deep lavender rose. A new shade too beautiful to describe accurately. **6 for 25c.**

**ROMANCE**—Salmon Rose with a red and yellow throat. **6 for 20c.**

**SPIRIT OF ST. LOUIS**—Orange saffron, very pretty. **6 for 20c.**

**VIRGINIA**—A beautiful large clear scarlet. **6 for 25c.**

**WASAGA**—Tall, well filled spikes, an excellent buff. **6 for 20c.**

## CANNAS

These blue rapidly growing plants make a beautiful background or base planting around porches, etc. also for bedding.

**ROSEA**—Green foliage, pink blooms, 4 ft.

**YELLOW KING HUMBERT**—Bronze foliage, yellow blossoms, 4 feet.

**KING HUMBERT**—Bronze foliage, scarlet blossoms, 4 feet.

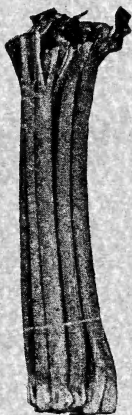
**THE PRESIDENT**—Green foliage, yellow blossoms, 5 feet.

Price of Cannas: 10c each, 90c dozen

Mixed Cannas: 75c dozen.

## Special Glad Value Our Rainbow Mixture

This mixture is composed of all colors in a well balanced mixture. A real bargain. Number one size \$1.75 per hundred. Numbers two and three \$1.95 a hundred.



## RHUBARB

### VICTORIA RHUBARB

Every one should have a few Rhubarb plants. It is so delicious early in the spring, baked as a vegetable or in pies.

Plant the roots early in the spring from April 10th to May 15th. May be planted along the fence or in some out of the way place. Feed liberally with manure if possible. Very early in the spring set a barrel with end knocked out over the plants this will make long tender stems.

2 roots for 25c

## INDEX

Item	Page
Flavoring Extracts	22
Flower Seed and Plants	9 - 13
Flower Bulbs	14 and inside back
Household Drugs	21
Lanteen	17
PHENOTHIAZINE	19
Poultry Remedies	20
Insecticides	16
Sprayers	16 - 17
Stock Remedies	18
Strawberry Plants	13
Thread	15
Vegetable Seed	3 - 7
Vegetable Plants	8

**GREEVER'S**  
**Chilhowie, Va.**  
Return Postage Guaranteed

To U.S. Dept of Agriculture  
Bureau of Plant Industry  
Washington D.C.

Box: 607, L. & E.
U. S. POSTAGE
<b>PAID</b>
Chilhowie, Va.
Permit No. 1